

The KCUE is composed of two legislative bodies, the General Assembly and Board of Trustees, and a Secretariat.

General Assembly

The General Assembly is the highest decision-making organ of the KCUE and is composed of representatives from approximately 200 four-year higher education institutions in South Korea. As set forth in article 13 of the KCUE's articles of association, the functions of the General Assembly include the following:

- Elect members of the Board of Trustees
- Amend the articles of association
- Approve budgets and account settlements
- Approve project proposals
- Perform other duties critical to KCUE operations

In addition to the above official functions, the General Assembly also holds discussions on key issues common to member universities, such as those related to academic affairs, finances, and facilities. The South Korean Minister of Education attends sessions of the General Assembly to elucidate government policy directions.

Regular sessions of the General Assembly are held annually, and special sessions are convened at the discretion of the chairman of the Board of Trustees; one special session is held each summer for an annual training seminar for member university presidents. Sessions are attended by university presidents or other university officials designated by the president.

Board of Trustees

The Board of Trustees is the representative decision-making and executive organ of the KCUE. It contributes to the development and progress of member universities by investigating and holding autonomous consultations on common issues and making recommendations to the government.

The board is composed of a chairman, three vice-chairmen, between ten and twenty trustees, and two auditors elected from among the presidents of member universities by the General Assembly and approved by the Minister of Education. The KCUE Secretary General is also considered a de facto trustee. Unlike the General Assembly, however, trustees cannot delegate responsibilities or authority to other university officials. Trustees are nominated with consideration given to rotating membership among member universities, regions, fields of specialization, membership on KCUE committees, etc.

As set forth in article 18 of the KCUE's articles of association, the functions of the Board of Trustees include the following:

Plan and direct KCUE affairs

Execute tasks related to KCUE affairs

Manage budgets and settle accounts

Carry out duties mandated by the General Assembly

Fulfill other duties specified in the articles of association

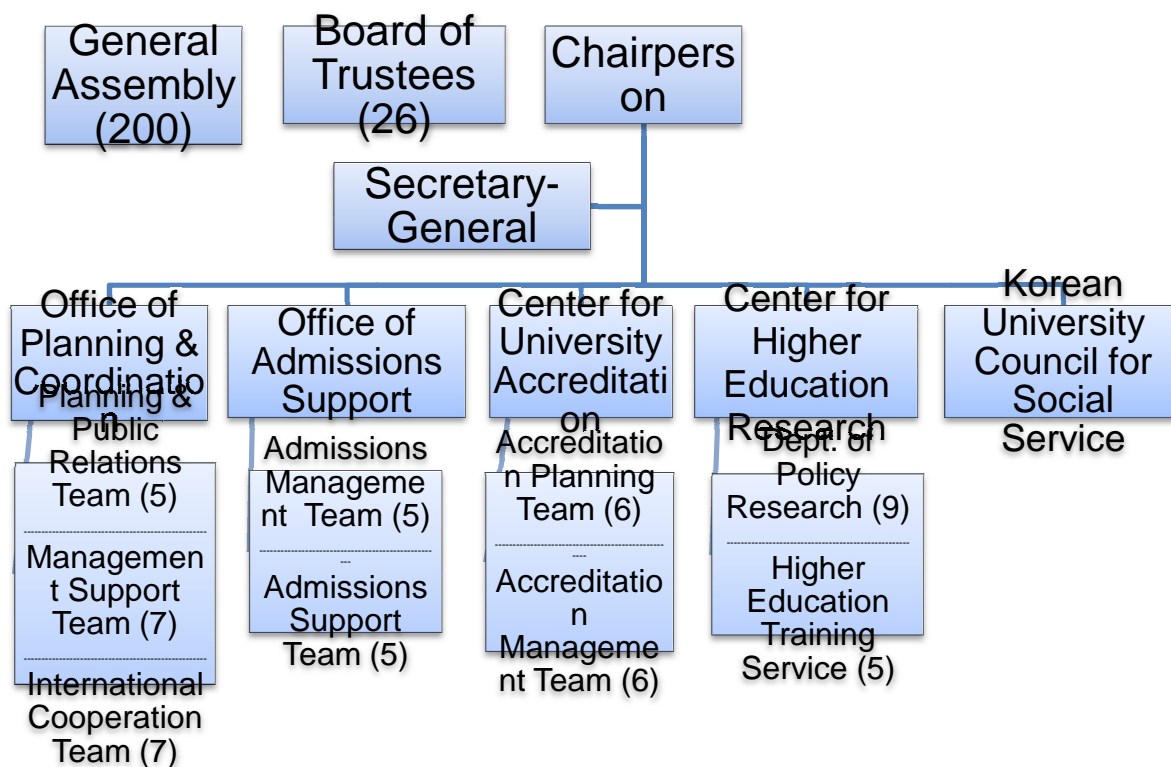
Perform other duties important to KCUE operations

The Board of Trustees normally meets every other month, six times a year. The chairman leads and summons the board, providing seven days notice of the purpose of the meeting. The chairman also must convene a meeting of the board within ten days in the event that a majority of trustees request a meeting and announce its purpose. Meetings are opened when a majority of trustees are in attendance, and decisions are made by majority agreement.

Secretariat

The KCUE Secretariat is headed by the Secretary-General and executes tasks and projects as directed by the General Assembly and Board of Trustees. Execution is accomplished through the Office of Planning & Coordination, the Office of Admission Support, the Center for University Accreditation, and the Center for Higher Education Research and their various teams as illustrated in the above organization chart.

- **Organization**



□ **General Assembly**

General Universities			Education Universities	Industrial Universities		Correspondence Universities	Total
National	Public	Private	National	National	Private	National	
24	2	151	10	5	7	1	200

□ **Board of Trustees**

Chairperson	Vice-Chairpersons	Trustees	Auditors	Total
1	3	20	2	26

□ Secretariat

Secretary- General	Office/Center Directors	Team Leaders	Staff		Total
			Researchers	Administrators	
1	4	5	16	26	52